



◆ DEVELOPMENT MANAGERS ◆
◆ ARCHITECTS ◆

Capability Statement

(2010)

**DEVELOPMENT MANAGEMENT
& DESIGN**



HARRY SIDAWAY & ASSOCIATES
2/430 Darling Street
Balmain NSW 2041
Tel : +61 2 9818 7899
Fax : +61 2 9818 7866
Email: sidaway@sydney.net
www.harrysidawayassociates.com.au
ABN 55 002 783 593



THE COMPANY

Harry Sidaway and Associates Pty Ltd offers high quality consulting services and innovatively managed economic solutions to the property and construction industries.

We serve private and public sector clients and have extensive experience in residential, community, commercial and industrial building planning and design.

We have long standing experience in managing and working with multi-disciplinary teams comprising urban designers, community planners, services and technical engineers and other specialist consultancies.



The company operates with a consistent design process and philosophy which is underpinned by strong development and project management practices. We strive to achieve a synthesis of economic and environmental innovation creating built environments of fine architectural and liveable qualities.

We take pride in our commitment to develop sustainable building solutions. Project specific briefs are developed which range from the assessment of project viability, the use of passive solar design principles and the siting of buildings, through to the use of new and emerging sustainable technologies.



SERVICES

Management ♦ Planning

- ♦ Development Management and Facilities Planning
 - ♦ Master Planning ♦ Rezoning Applications
- ♦ Project Assessment ♦ Economic Feasibilities
 - ♦ Community Consultation
- ♦ Advocacy and Expert Representation

Project Design

- ♦ Project Management ♦ Building Design and Documentation
 - ♦ Authority Approvals
- ♦ Budget Analysis and Control ♦ Contract Administration

Interiors

- ♦ Facilities Planning ♦ Interior Design
- ♦ Construction Fitout and Management



DEVELOPMENT TYPES

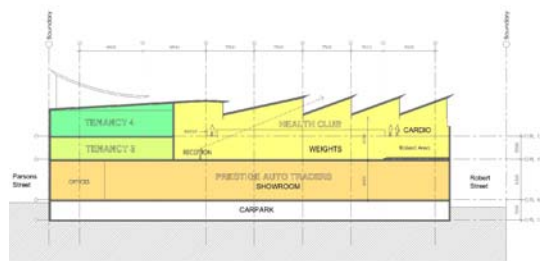
- ♦ Commercial and Retail
- ♦ Community Based ♦ Medium-High Density Residential
 - ♦ Low Scale and Individual Housing
 - ♦ Industries and Warehousing
 - ♦ Adaptive Reuse



RECENT PROJECTS

Commercial and Retail

- ◆ Media and Office Development – Rozelle [\$15M] ◆ Boutique Commercial Building – Leichhardt [\$9M]
 - ◆ Officeworks – Glebe [\$4M] ◆ JB Hi-Fi – Leichhardt [\$2M]
- ◆ Home Renovations Centre – Camperdown [\$15M] ◆ Multi Storey Gymnasium and Offices – Rozelle [\$26M]



Community Based

- ◆ Lane Cove Bowling Club Redevelopment – Masterplan and Pre-Design [\$18M]
- ◆ Affordable Fitness PCYC [\$100k] ◆ Lilyfield Day Care Centre [\$3M] ◆ Gladstone Park Bowling Club
- ◆ Community Market & Stalls – Leichhardt [\$2M] ◆ Drummoyne Rugby Club – Design Alterations [\$400k]



Medium-High Density Residential

- ◆ Luxury Waterfront Apartments – Drummoyne [\$20M] ◆ Retail and Apartments – Avalon [\$6M]
- ◆ Retail and Apartments – Newport [\$15M] ◆ High Density Rezoning – Lane Cove [\$200M]
 - ◆ Mixed Use Residential – Five Dock [\$30M] ◆ Cluster Housing – Turramurra [\$15M]
 - ◆ Luxury Townhomes – Glebe [\$28M] ◆ SOHO Apartments – St Peters [\$5M]



Low Scale Housing

- ◆ Executive Residences - Balmain
- ◆ Large Houses – Strathfield, Bondi Junction, Leichhardt, Concord and Ashbury
 - ◆ Residential Subdivision and Houses - St Ives
 - ◆ Luxury Houses – Killara, West Lindfield
- ◆ Design Small Apartments - Lemon Tree Passage



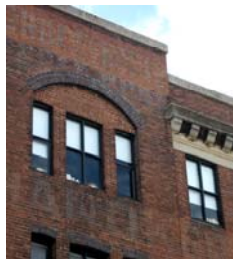
Industries and Warehousing

- ◆ Media Office and Warehousing – Lilyfield [\$10M] ◆ Industrial Units – Lidcombe [\$12M]
 - ◆ Refurbishment of Offices and Warehousing – Lane Cove [\$8M]
 - ◆ Australia Post Depot – Camperdown [\$4M]



Adaptive Reuse

- ◆ Apartments Conversion – Annandale [\$6M] ◆ Paper Factory – Glebe [\$5M]
- Broadway Hotel [\$10M] ◆ SOHO Apartments Conversion – Annandale [\$10M]



Interiors

- ◆ Luxury Townhomes – Glebe [\$28M]
- ◆ Large Townhouse Development – Forest Lodge [\$35M]
 - ◆ Townhouses & Villas [Various]



Development Management

- ◆ Shopping Centre and Mixed Use Development Masterplan – Camperdown
 - ◆ Commercial Office Building – Rozelle
 - ◆ Multi-media Centre – Lilyfield
- ◆ High Density Apartments Masterplan and Rezoning – Lane Cove
 - ◆ Office Development Mascot [\$45M] – Economic Evaluation

